

BUNUN UNICORN 40,045 DWT Bulk Carrier 46

[Contents](#)
[By Builder](#)
[By Ship Type](#)


The Hakodate Dock Co., Ltd. delivered the 40,000 DWT type log / bulk carrier, BUNUN UNICORN, built at its Hakodate Shipyard on 8th June, 2023. The vessel is one of a series of HIGH BULK 40E jointly developed with Namura Shipbuilding Co., Ltd.

This design adopts all advantages of the previous generation of the HIGH BULK 34E series, with the concept of more

competitiveness in maximizing the volume of cargo capacity for grains, coals, steels, logs, etc. and more eco-friendly operation by reducing fuel consumption with optimized hull form and energy-saving devices.

Various measures for energy and fuel saving efficiency are incorporated in addition to the hull form such as the newly developed vertical shaped bow and three energy saving

devices, the Namura flow Control Fin (NCF), the Rudder Fin (R-Fin) and the additional fins behind NCF attached to the stern, which improve propulsion performance and fuel saving efficiency. Therefore, this vessel has achieved EEDI (Energy Efficiency Design Index) Phase 3.

Semi-box shaped cargo holds with larger cargo hatch covers are adopted for serviceable and safer operations in cargo handling work. Double hull construction is adopted for security against unexpected occurrences such as collision damage and cargo leakage. Four deck cranes on the upper deck in the centre line and the collapsible-type stanchion on the upper deck are equipped for loading logs.

PRINCIPAL PARTICULARS

Length (o.a.)	182.94 m
Length (b.p.)	179.90 m
Breadth (mld.)	31.60 m
Depth (mld.)	14.80 m
Draft (mld.)	9.30 / 10.37 m
Gross tonnage	24,472
Deadweight	40,045 t
Main engine	J-ENG 6UEC42LSH-Eco-D3-EGR
MCR (kw x rpm)	5,050 kW x 101.0 rpm
NOR (kw x rpm)	4,290 kW x 95.7 rpm
Speed (max. trial)	14.93 knots
(service)	13.6 knots
Complement	24
Classification	NK
Handling gear	30.5 t x 26 m/R (Nos.1~4)
Loading capacity (grain)	50,517.50 cub.m
(bale)	49,153.38 cub.m
(Log)	7,282,165 S.C.R.
Builder	The Hakodate Dock Co., Ltd.

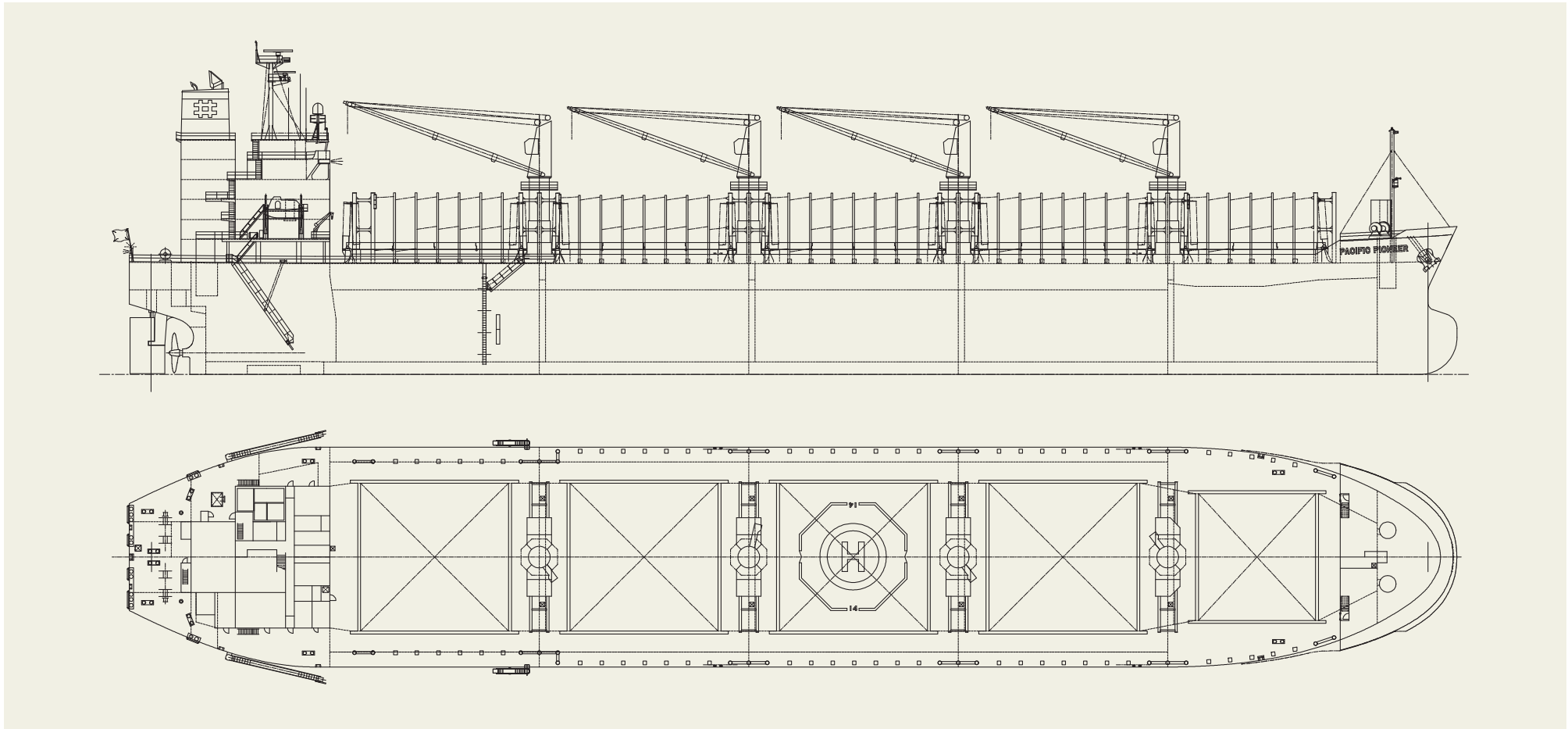
PACIFIC PIONEER 38,000 DWT Bulk Carrier 47

[Contents](#)

[By Builder](#)

[By Ship Type](#)



PACIFIC PIONEER 38,000 DWT Bulk Carrier 47[Contents](#)[By Builder](#)[By Ship Type](#)**PRINCIPAL PARTICULARS**

Depth (mld.).....	29.8 m	MCR (kw × rpm).....	5,920 x 106
Gross tonnage.....	23,579	Speed (service).....	14.25 knots
Deadweight.....	37,534	Classification.....	NK
		Builder:	Shimanami Shipyard Co., Ltd.

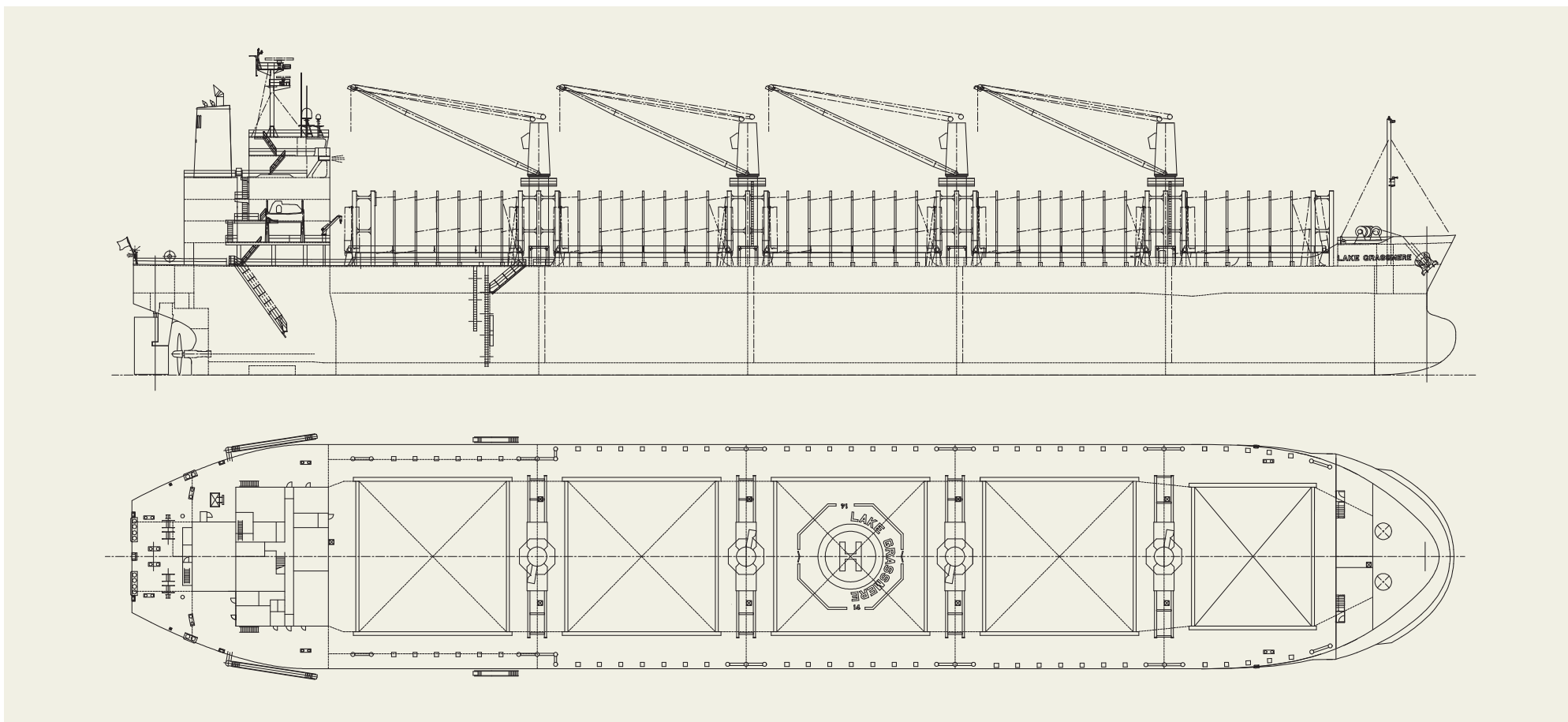
LAKE GRASSMERE 40,000 DWT Bulk Carrier 48

[Contents](#)

[By Builder](#)

[By Ship Type](#)



LAKE GRASSMERE 40,000 DWT Bulk Carrier 48[Contents](#)[By Builder](#)[By Ship Type](#)**PRINCIPAL PARTICULARS**

Breadth (mld.).....	31 m	MCR (kw x rpm)	5,150 x 103
Depth (mld.).....	15 m	Speed (service).....	14 knots
Gross tonnage.....	25,006	Classification	NK
Deadweight.....	40,177	Builder.....	Imabari Shipbuilding Co., Ltd.

BOHOL ISLAND 39,260 DWT Bulk Carrier 49

[Contents](#)

[By Builder](#)

[By Ship Type](#)



BOHOL ISLAND 39,260 DWT Bulk Carrier 49

Contents By Builder By Ship Type

Oshima Shipbuilding Co., Ltd. delivered BOHOL ISLAND, a 39,260-DWT bulk carrier, to LEYTE NAVIGATION, S.A. in April 2022.

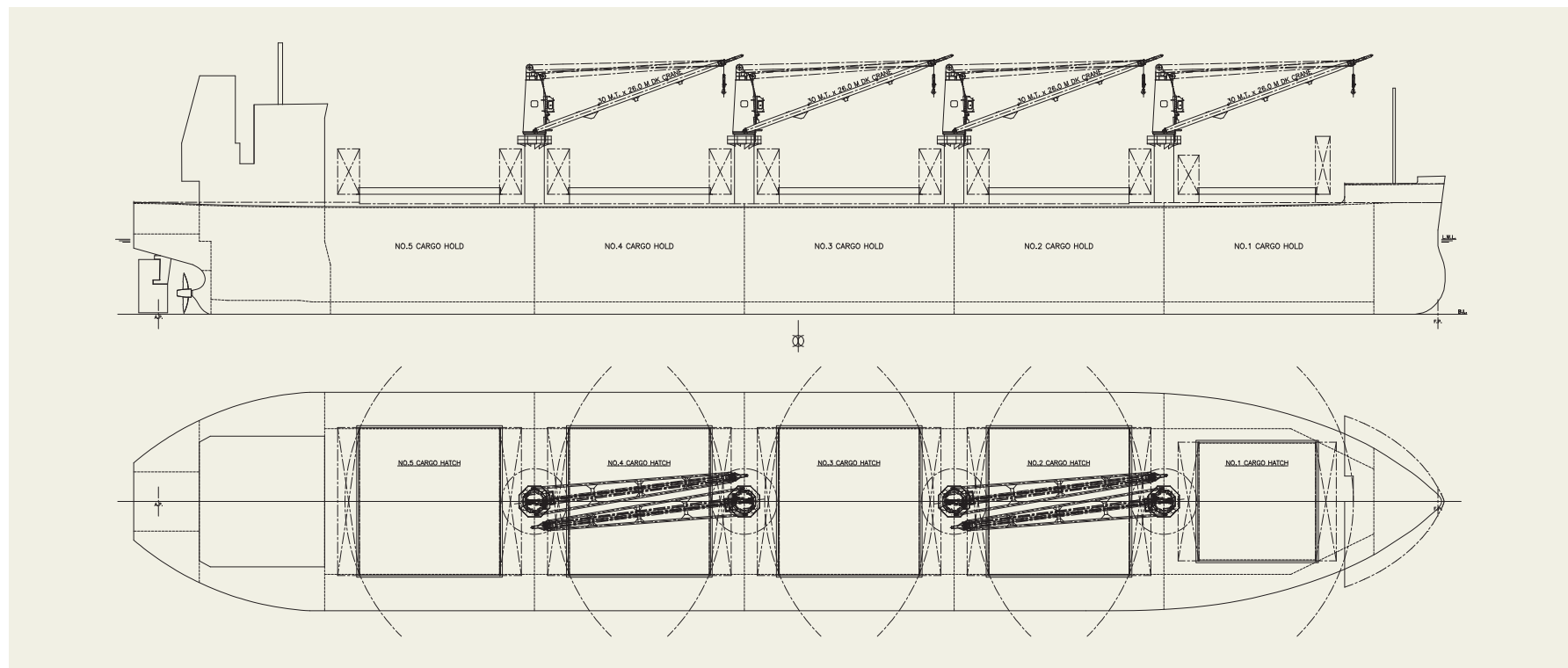
Features

1. For unitized cargo and easy cargo handling, this vessel has box shaped cargo holds.
2. Wide hatch cover improves cargo handling efficiency.
3. Advanced Flipper Fins & Rudder Fin which improve propulsion efficiency are installed.
4. Special bow form, Seaworthy Bow improves speed performance in rough sea conditions as compared to ordinary bows.
5. Dangerous cargoes also can be loaded in cargo hold.

PRINCIPAL PARTICULARS

Length (o.a.).....	179.99 m
Breadth (mld.).....	30.00 m
Depth (mld.).....	15.33 m
Draft (mld.).....	10.826 m
Gross tonnage.....	23602
Deadweight.....	39,260 MT

Main engine	J-ENG 6UEC42LSH-Eco-D3-EGR
MCR (kw x rpm)	5,400 kW x 106.0rpm
Speed (service).....	14.00 knots
Complement.....	25
Classification	NK
Loading capacity (grain).....	49,237 m ³
Builder.....	Oshima Shipbuilding Co., Ltd.



FEDERAL PASSION 42,692 DWT Bulk Carrier 50

[Contents](#)

[By Builder](#)

[By Ship Type](#)



FEDERAL PASSION 42,692 DWT Bulk Carrier 50

Contents

By Builder

By Ship Type

Oshima Shipbuilding Co., Ltd. delivered FEDERAL PASSION, a 42,692-DWT bulk carrier, to MK CENTENNIAL MARITIME B.V. in June 2022.

Features

1. This vessel has an optimized hull form for carrying a variety of cargoes, such as grain, ore, cement, hot coil, nickel ore, coal and dangerous cargoes and large deadweight(42,692MT) with shallow draft (10.516m)
2. This vessel has a lot of cargo to be targeted and accommodates various loading patterns.
3. Wide opening folding type hatch cover and four sets of high performance Jib cranes (30MT) are installed for

PRINCIPAL PARTICULARS

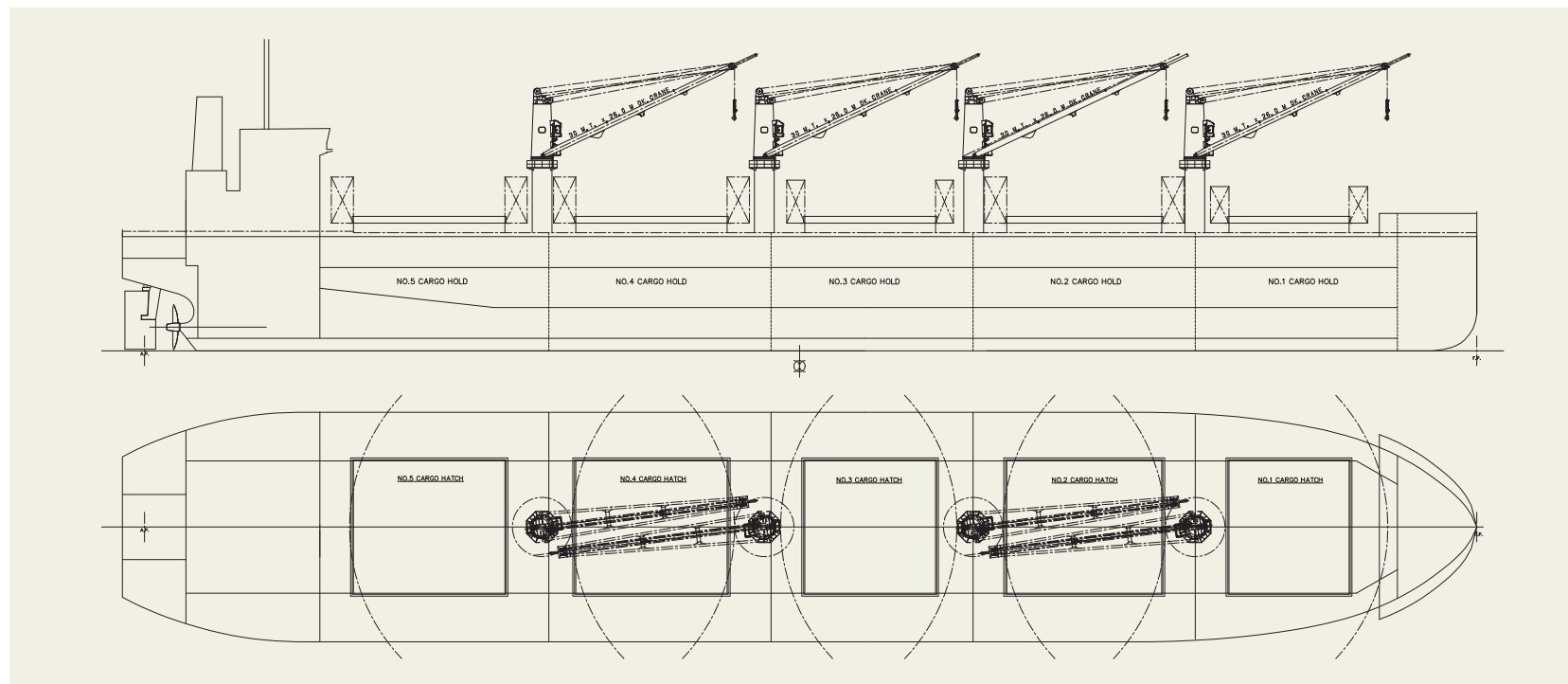
LLength (o.a.).....	182.998 m
Breadth (mld.).....	32.26 m
Depth (mld.).....	15.00 m
Draft (mld.).....	10.516 m
Gross tonnage.....	25831
Deadweight.....	42,692 MT

Main engine	MITSUI MAN B&W 5S50ME-C9.7-EGRBP
MCR (kw x rpm)	5,720 kW x 100.0 rpm
Speed (service).....	14.00 knots
Complement.....	25
Classification	NK
Loading capacity (grain).....	55,131 m ³
Builder.....	Oshima Shipbuilding Co., Ltd.

efficient cargo handling.

4. Advanced Flipper Fins & Rudder Fin which improve propulsion efficiency are installed.

5. Special bow form, Seaworthy Bow improves speed performance in rough sea conditions as compared to ordinary bows.



LILY GLORY 58,351 DWT Bulk Carrier 51

[Contents](#)

[By Builder](#)

[By Ship Type](#)



LILY GLORY 58,351 DWT Bulk Carrier 51

Contents By Builder By Ship Type

Oshima Shipbuilding Co., Ltd. delivered LILY GLORY, a 58,351-DWT bulk carrier, to LEEWARD NAVIGATION, S.A. in January 2023.

Features

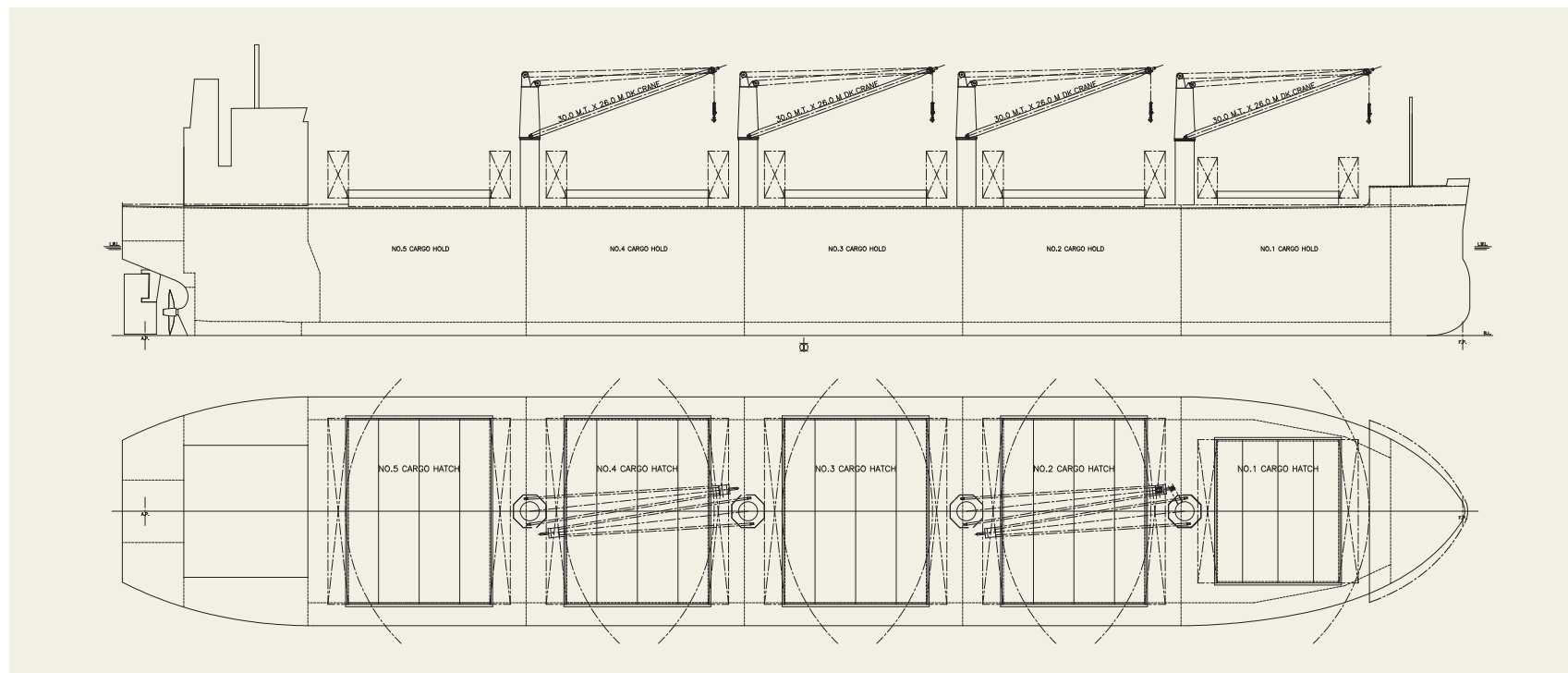
1. This vessel has an optimized hull form for carrying grain, ore, coal, hot coil, steel pipe, cement and dangerous cargoes, and large deadweight (58,351 MT) with shallow draft (13.048 m).
2. Due to wide opening folding type hatch cover and without top side tank, it is possible to prevent the cargo from being damaged due to handling by loading directly with crane.

PRINCIPAL PARTICULARS

Length (o.a.).....	189.99 m
Breadth (mld.).....	32.26 m
Depth (mld.).....	18.54 m
Draft (mld.).....	13.048 m
Gross tonnage.....	33110
Deadweight.....	58,351 MT

Main engine	J-ENG 6UEC50LSH-Eco-C3-EGR
MCR (kw x rpm)	6,560 kW x 95.0 rpm
Speed (service).....	14.30 knots
Complement.....	24
Classification	NK
Loading capacity (grain)	66,937 m ³
Builder.....	Oshima Shipbuilding Co., Ltd.

3. Advanced Flipper Fins & Rudder Fin which improve propulsion efficiency are installed. performance in rough sea conditions as compared to ordinary bows.
4. Special bow form, Seaworthy Bow improves speed



FEDERAL HAMILTON 34,763 DWT Bulk Carrier 52

[Contents](#)

[By Builder](#)

[By Ship Type](#)



FEDERAL HAMILTON 34,763 DWT Bulk Carrier 52

Contents By Builder By Ship Type

Oshima Shipbuilding Co., Ltd. delivered FEDERAL HAMILTON, a 34,763-DWT bulk carrier, to FEDERAL TRIDENT LTD., in August 2023.

Features

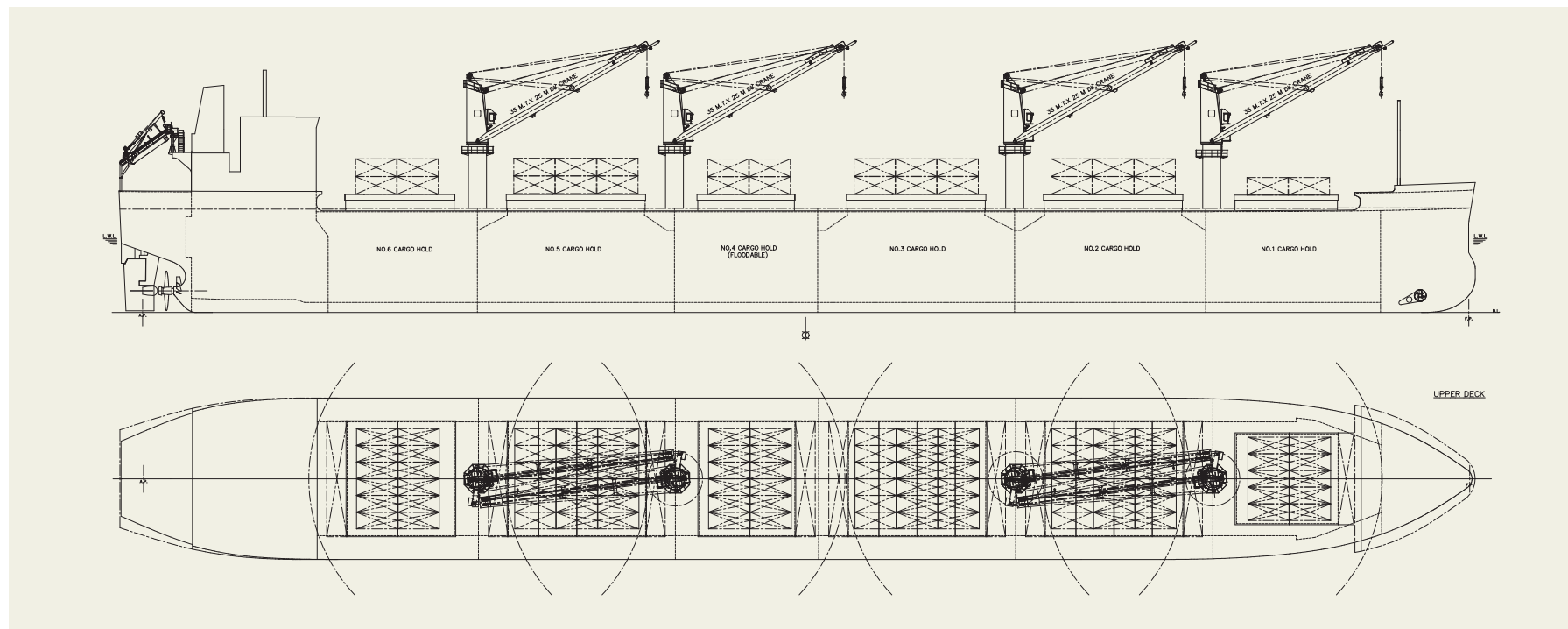
1. The vessel is an ICE – 1C class Laker
2. This vessel has been designed with a large deadweight and shallow draft
3. For unitized cargo and easy cargo handling, this vessel has box shaped cargo hold.
4. Four sets of high performance jib cranes (35MT) are installed for efficient cargo handling.
5. Bow thruster and High-lift rudder of mariner type (with

PRINCIPAL PARTICULARS

Length (o.a.).....	199.98 m
Breadth (mld.).....	23.762 m
Depth (mld.).....	14.85 m
Draft (mld.).....	10.861 m
Gross tonnage.....	21043
Deadweight.....	34,763 MT

Main engine.....	MITSUI-MAN B&W 5S50ME-C9.7-HPSCR
MCR (kw x rpm).....	6,050 kW x 97.0 rpm
Speed (service).....	14.15 knots
Complement.....	25
Classification.....	DNV
Loading capacity (grain).....	41,607 m ³
Builder.....	Oshima Shipbuilding Co., Ltd.

6. Special bow form Seaworthy Bow improves speed performance in rough sea conditions compared ordinary bows.
6. Special bow form Seaworthy Bow improves speed performance in rough sea conditions compared ordinary bows.



NORVIC SINGAPORE 39,738 MT Bulk Carrier 53

[Contents](#)

[By Builder](#)

[By Ship Type](#)

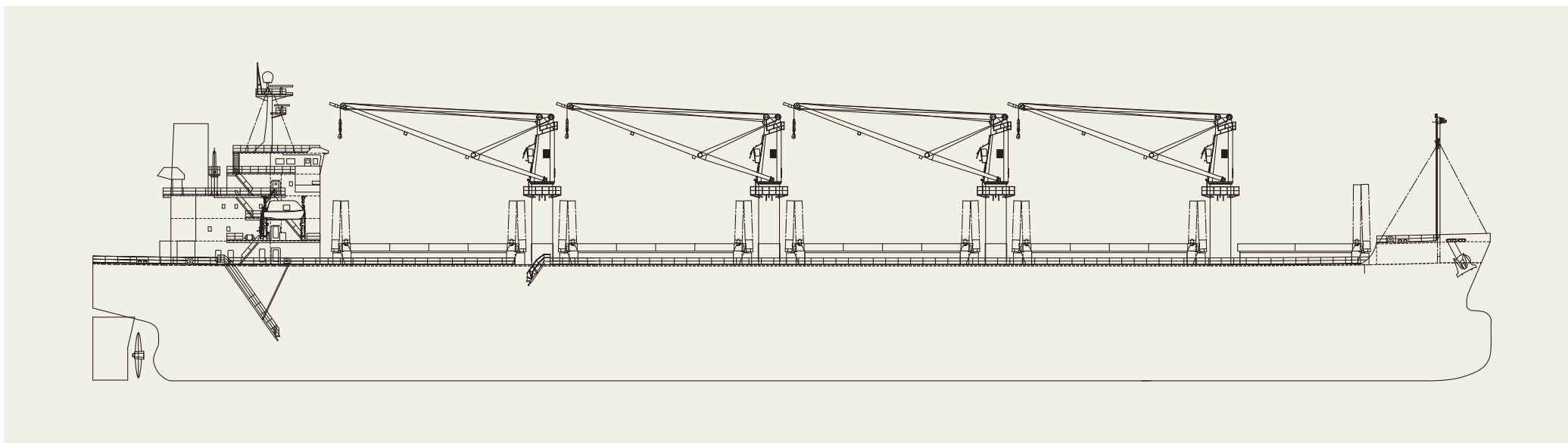


NORVIC SINGAPORE 39,738 MT Bulk Carrier **53**[Contents](#)[By Builder](#)[By Ship Type](#)**Features**

1. The cargo holds are semi-box shape, and it is capable to carry various cargoes with wide hatch cover.
2. The vessel has been developed as earth-friendly vessel. She features optimized hull shape, energy-saving device and low-revolution and low-consumption electrically controlled type engine, and these lead to comply EEDI phase 3 in advance.
3. The vessel has four (4) sets of 30 ton electro-hydraulic type deck crane.
4. Nitrogen oxides in exhaust gas reducing system is adopted to lessen the environmental burden.

PRINCIPAL PARTICULARS

Length (o.a.)	199.99 m	Speed (max. trial)	15.15 knots
Length (b.p.)	174.00 m	(service)	13.5 knots
Breadth (mld.)	32.00 m	Complement	25
Depth (mld.)	14.80 m	Classification	NK
Draft (mld.)	10.20 m	Handling gear	4sets Electro-Hydraulic type Deck Crane
Gross tonnage	24,754	Cargo pump	Nil
Deadweight	39,738 MT	Loading capacity (tank)	N/A
Main engine	MAN-B&W 6G45ME-C9.7-HPSCR	(grain)	49,880.4 m ³
MCR (kw x rpm)	5,280 kW x 92.4min ⁻¹	(bale)	48,835.1 m ³
NOR (kw x rpm)	4,490 kW x 87.5 min ⁻¹	Builder	Onomichi Dockyard Co., Ltd.



TOSA HARMONY 39,911 DWT Bulk Carrier 54

[Contents](#)

[By Builder](#)

[By Ship Type](#)



TOSA HARMONY 39,911 DWT Bulk Carrier 54

Contents

By Builder

By Ship Type

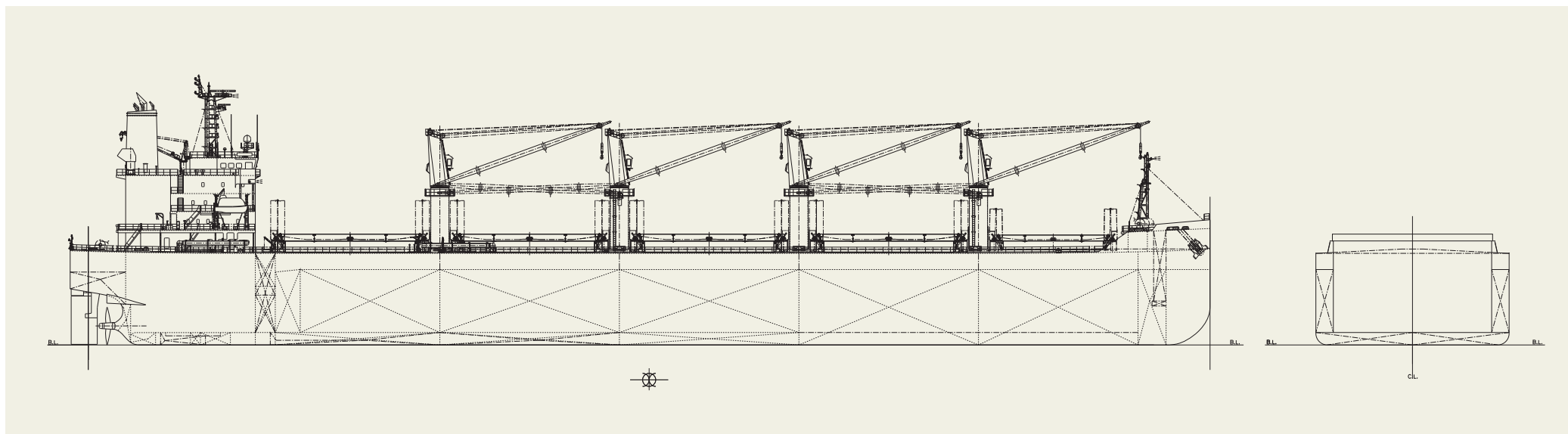
The 39,911-dwt bulk carrier TOSA HARMONY was built at SHIN KURUSHIMA KOCHIYUKO CO., LTD. and delivered to CORTES MARCHA CORPORATION in January 2023.

Features

1. The vessel has double hull construction for all five (5) cargo holds. No.2, No.3 and No.4 cargo holds are fully box shape construction.
2. Wide size hatches and box shape holds are highly efficient for steel coils and other cargoes loading.
3. The hatch covers are wide folding type and operated by hydraulic cylinders.
4. The vessel has four (4) sets of 30ton electro-hydraulic single deck cranes.

PRINCIPAL PARTICULARS

Length (o.a.)	182.87 m	MCR (kw x min ⁻¹).....	5,700kW x 105min ⁻¹
Length (b.p.).....	179.95 m	NOR (kw x min ⁻¹).....	4,845kW x abt 99.5 min ⁻¹
Breadth (mld.).....	31.00 m	Speed (service).....	14.0 knots
Depth (mld.).....	14.70 m	Complement.....	25P
Draft (mld.).....	10.32 m	Classification	NK
Gross tonnage.....	25,038	Loading capacity (grain).....	48,358 m ³
Deadweight.....	39,911 t	(bale).....	47,116 m ³
Main engine	MAKITA-MITSUI-MAN B&W 6S46ME-B8.5-HPSCR	Builder:	Shin Kurushima Kochijyuko Co., Ltd.



NAGATO MARU 13,596 DWT Bulk Carrier 55

[Contents](#)

[By Builder](#)

[By Ship Type](#)



NAGATO MARU 13,596 DWT Bulk Carrier 55

Contents

By Builder

By Ship Type

The 13,596 dwt bulk carrier NAGATO MARU was built at SHIN KURUSHIMA KOCHIYUKO CO., LTD. and delivered to the Japanese Owner in November 2022

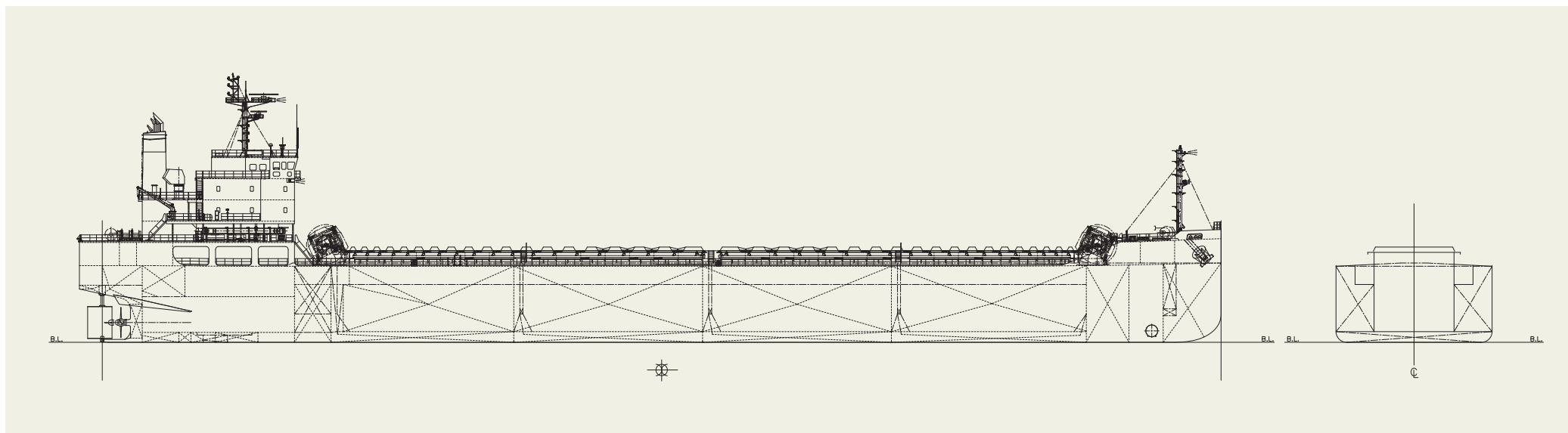
Features

1. The vessel can be used for loading coal as well as limestone.
2. The vessel has double hull and fully box shape construction for all four (4) cargo holds.
3. The hatch covers are two (2) sets of end rolling "ERMAN" type for NO.1&2 and NO.3&4 cargo holds.

PRINCIPAL PARTICULARS

Length (o.a.)	149.96 m
Length (b.p.)	146.95 m
Breadth (mld.)	20.50 m
Depth (mld.)	10.00 m
Draft (mld.)	7.1 m
Gross tonnage	9,250
Deadweight	13,596 t

Main engine	MAKITA-MITSUI-MAN B&W 6S35ME-B9.5
MCR (kw x min ⁻¹)	3,850 kW x 153 min ⁻¹
NOR (kw x min ⁻¹)	3,273 kW x abt. 145 min ⁻¹
Speed (service)	12.65 knots
Complement	15 P
Classification	NK
Loading capacity (grain)	10,431 m ³
Builder:	Shin Kurushima Kochiyuko Co., Ltd.



GREEN FAIRY 16,905 DWT Bulk Carrier 56

[Contents](#)

[By Builder](#)

[By Ship Type](#)



GREEN FAIRY 16,905 DWT Bulk Carrier 56

Contents

By Builder

By Ship Type

The 16,905-dwt bulk carrier GREEN FAIRY was built at SHIN KURUSHIMA KOCHIYUKO CO., LTD. and delivered to TRADE OCEAN CO., LTD. and NIPPON GAS LINE CO., LTD. in August 2023.

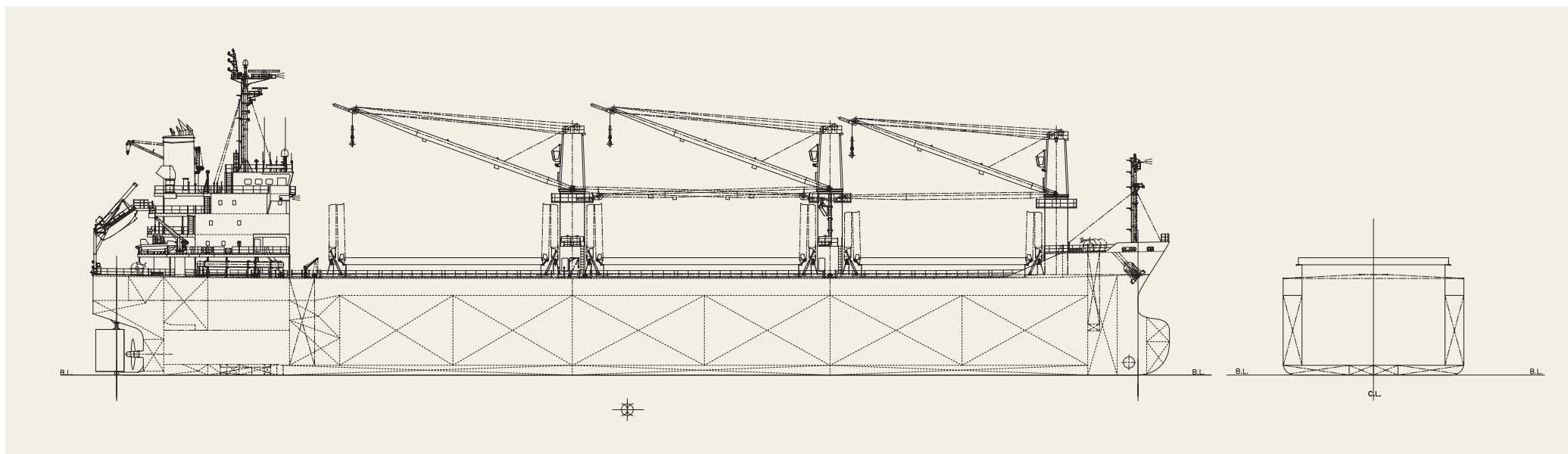
Features

1. The vessel has double hull construction for all three (3) cargo holds. are fully box shape construction.
2. Wide size hatches and box shape holds are highly efficient for steel coils and other cargoes loading.
3. The hatch covers are wide folding type and operated by hydraulic cylinders.
4. The vessel has three (3) sets of 30.7-ton electro-hydraulic single deck cranes.

PRINCIPAL PARTICULARS

Length (o.a.)	137.03 m
Length (b.p.).....	130.00 m
Breadth (mld.).....	23.00 m
Depth (mld.).....	12.30 m
Draft (mld.).....	8.47 m
Gross tonnage.....	11,361
Deadweight.....	16,905 t
Main engine	MAKITA-MITSUI-MAN B&W 6S35MC7.1

MCR (kw x min ⁻¹).....	3,570 kW x 173min ⁻¹
NOR (kw x min ⁻¹).....	3,213 kW x abt. 167 min ⁻¹
Speed (service).....	12.85 knots
Complement.....	21 P
Classification.....	NK
Handling gear.....	30.7t x 3sets
Loading capacity (grain).....	21,038 m ³
(bale).....	20,573 m ³
Builder:	Shin Kurushima Kochiyuko Co., Ltd.



SALVIA ISLAND 42,200 DWT TESS42 57

[Contents](#)

[By Builder](#)

[By Ship Type](#)



SALVIA ISLAND 42,200 DWT TESS42 **57**

Contents

By Builder

By Ship Type

New model at the forefront of larger handysize bulk carriers
We were at the first to address the new development of larger handysize bulk carrier with the deadweight of 42,200 MT. This is a new Eco-ship design developed by our exclusive and unique fuel efficiency technology together with the combinations of the versatility and popularity of the well-known TESS38 design.

Features

1. Fuel efficiency and environmental performance

- The unique hull form, which reduces resistance, is paired with our exclusive fuel-efficiency technologies to improve the ship's performance.
- Equipped with the environmental technologies devices to prevent the air pollution from the NOx and SOx emissions and marine pollution from the oil spillages, etc.

2. Versatility

- Versatility retained with the same length as TESS38.
 - Excellent trading flexibility for carrying the three major bulk cargoes of iron ore, grains, coal, as well as lumber, hot coils, sulfur, etc.
 - Apply semi-box-type cargo holds that are suitable for transporting steel products as well.
3. Loading performance
- Compared to TESS38, the deadweight capacity is in-

creased by approximately 2,000 MT at the same draft and by approximately 4,000 MT at full load.

- With a cargo capacity of 52,400 m³, this ship can transport large volumes of low-density cargo, such as grains.

4. Comfortability

The original interior concept NEXT STYLE, utilizing exquisite design and indirect lighting, provides the crew with relaxation and comfort.

PRINCIPAL PARTICULARS

Length (o.a.)	180 m	Gross tonnage	26,700
Length (b.p.)	32.2 m	Deadweight	42,200 mt
Depth (mld.)	15.4 m	Loading capacity (grain)	52,400 m ³
Draft (mld.)	10.75 m	Builder:	Tsuneishi Shipbuilding Co., Ltd.

